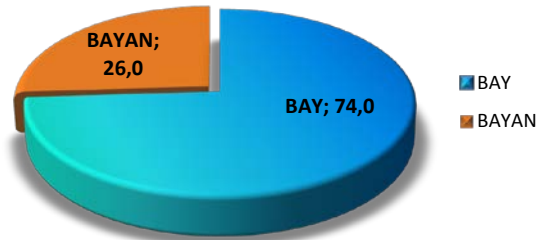


TÜRKİYE GENELİ HAKİM VE CUMHURİYET SAVCISI KADRO DURUMU

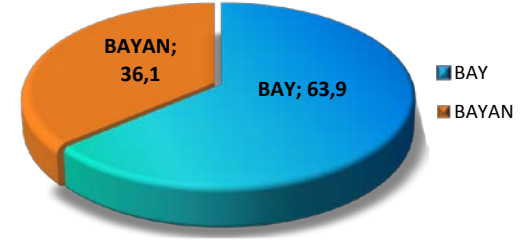
	BAY	%	BAYAN	%
HAKİM	5721	63,9	3239	36,1
SAVCI	4396	93,4	310	6,6
TOPLAM	10117	74,0	3549	26,0

- 1- Türkiye geneli toplam 13.666 hakim ve savcı bulunmaktadır. Bunun 8.960 (%65,6) hakim, 4.706'sı (% 34,4) savcıdır; 10.117'si (% 74,0) bay, 3.549'u (%26,0) bayandır.
- 2- Türkiye geneli toplam 8.960 hakim bulunmaktadır. Bunun 5.721'i (% 63,9) bay, 3.239'u (% 36,1) bayandır
- 3- Türkiye geneli toplam 4.706 savcı bulunmaktadır. Bunun 4.396'sı (% 93,4) bay, 310'u (% 6,6) bayandır.

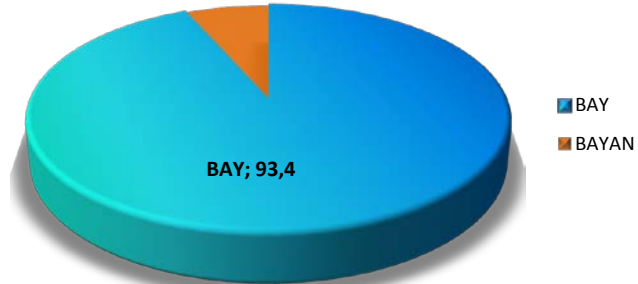
TÜRKİYE GENELİ HAKİM-SAVCI SAYILARININ CİNSİYETE GÖRE DAĞILIMI



TÜRKİYE GENELİ HAKİM SAYILARININ CİNSİYETE GÖRE DAĞILIMI



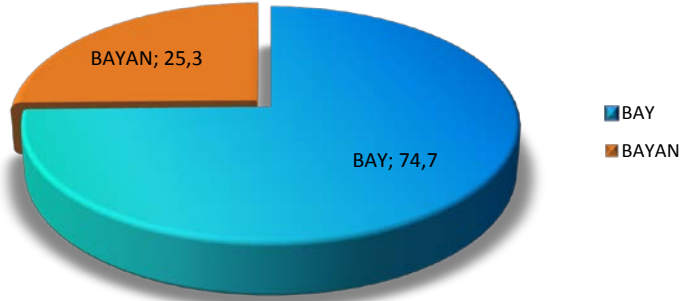
TÜRKİYE GENELİ SAVCI SAYILARININ CİNSİYETE GÖRE DAĞILIMI
BAYAN; 6,6



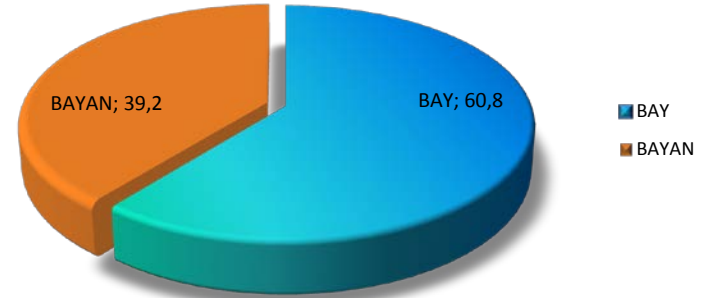
**ADLİ YARGI
HAKİM VE CUMHURİYET SAVCISI KADRO DURUMU**

	BAY	%	BAYAN	%
HAKİM	3779	60,8	2436	39,2
SAVCI	4185	94,2	260	5,8
TOPLAM	7964	74,7	2696	25,3

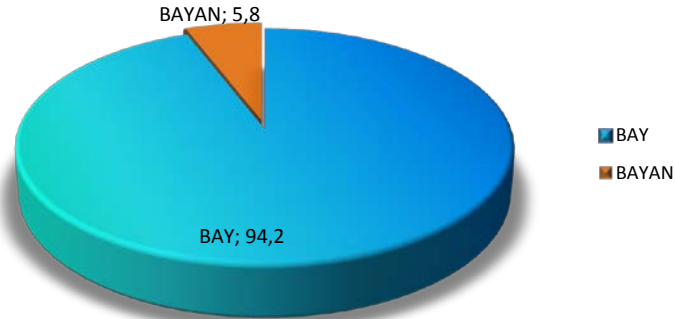
ADLİ YARGI HAKİM-SAVCI SAYILARININ CİNSİYETE GÖRE DAĞILIMI



ADLİ YARGI HAKİM SAYILARININ CİNSİYETE GÖRE DAĞILIMI

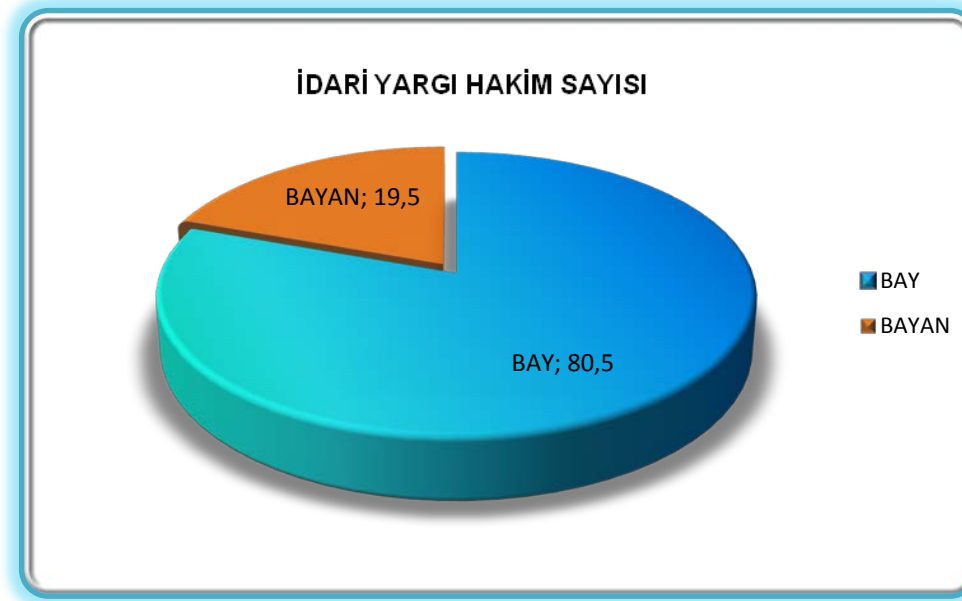


ADLİ YARGI SAVCI SAYILARININ CİNSİYETE GÖRE DAĞILIMI



İDARİ YARGI HAKİMİ

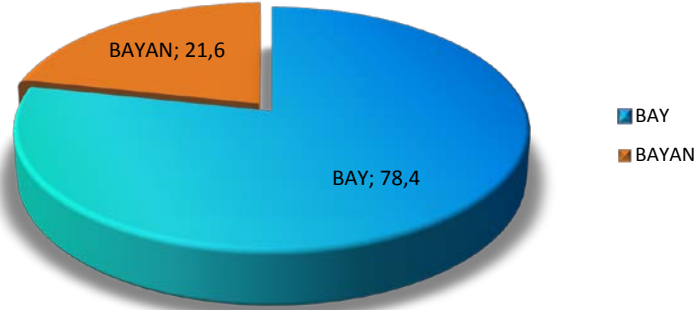
	BAY	%	BAYAN	%
HAKİM	739	80,5	179	19,5



DANIŐTAY
ÜYE, HAKİM VE SAVCI KADRO DURUMU

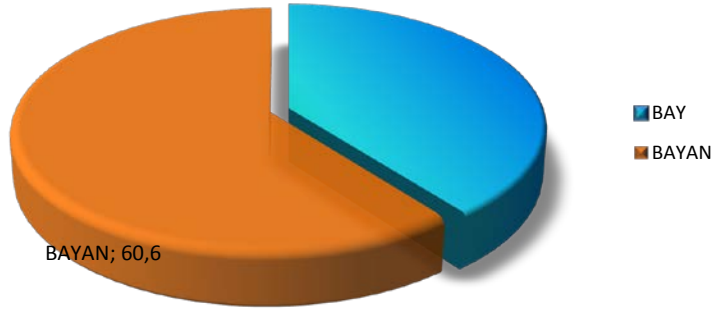
	BAY	%	BAYAN	%
ÜYE	116	78,4	32	21,6
TETKİK HAKİMİ	217	62,5	130	37,5
SAVCI	13	39,4	20	60,6
TOPLAM	346	65,5	182	34,5

DANIŐTAY ÜYE SAYILARININ CİNSİYETE GÖRE DAĞILIMI

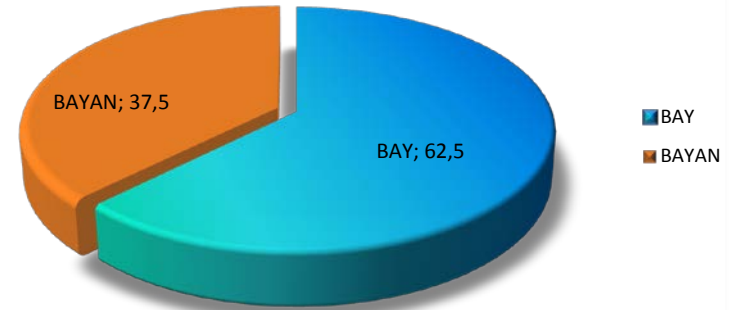


DANIŐTAY SAVCISI SAYISININ CİNSİYETE GÖRE DAĞILIMI

BAY; 39,4



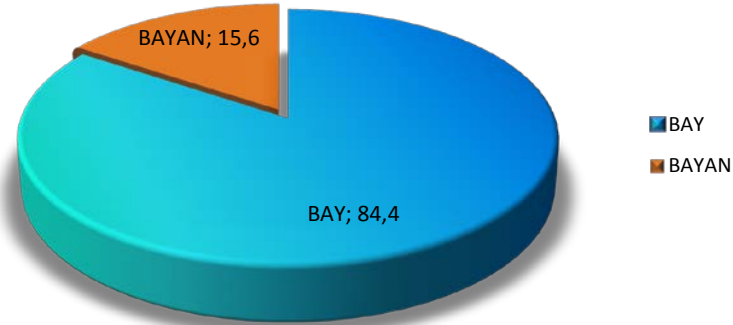
DANIŐTAY TETKİK HAKİMİ SAYISININ CİNSİYETE GÖRE DAĞILIMI



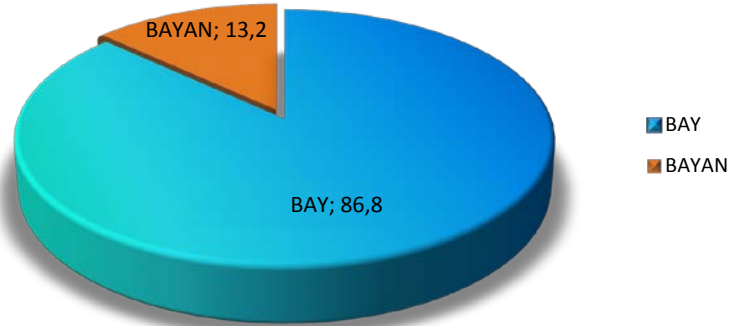
**YARGITAY
ÜYE, HAKİM VE CUMHURİYET SAVCISI KADRO DURUMU**

	BAY	%	BAYAN	%
ÜYE	318	84,4	59	15,6
TETKİK HAKİMİ	585	56,1	458	43,9
SAVCI	198	86,8	30	13,2
TOPLAM	1101	66,8	547	33,2

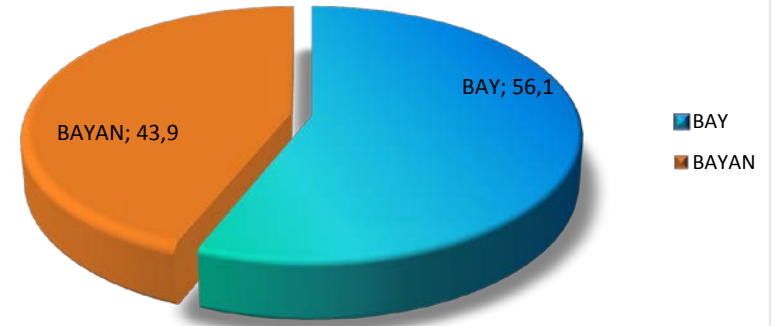
YARGITAY ÜYE SAYILARININ CİNSİYETE GÖRE DAĞILIMI



YARGITAY CUMHURİYET SAVCISI SAYISININ CİNSİYETE GÖRE DAĞILIMI



YARGITAY TETKİK HAKİMİ SAYISININ CİNSİYETE GÖRE DAĞILIMI



**ANAYASA MAHKEMESİ
RAPORTÖRÜ (HAKİM SINIFINDAN) KADRO
DURUMU**

	BAY	%	BAYAN	%
HAKİM	34	81,0	8	19,0

ANAYASA MAHKEMESİ RAPORTÖRÜ (HAKİM SINIFINDAN) CİNSİYETE GÖRE DAĞILIMI

